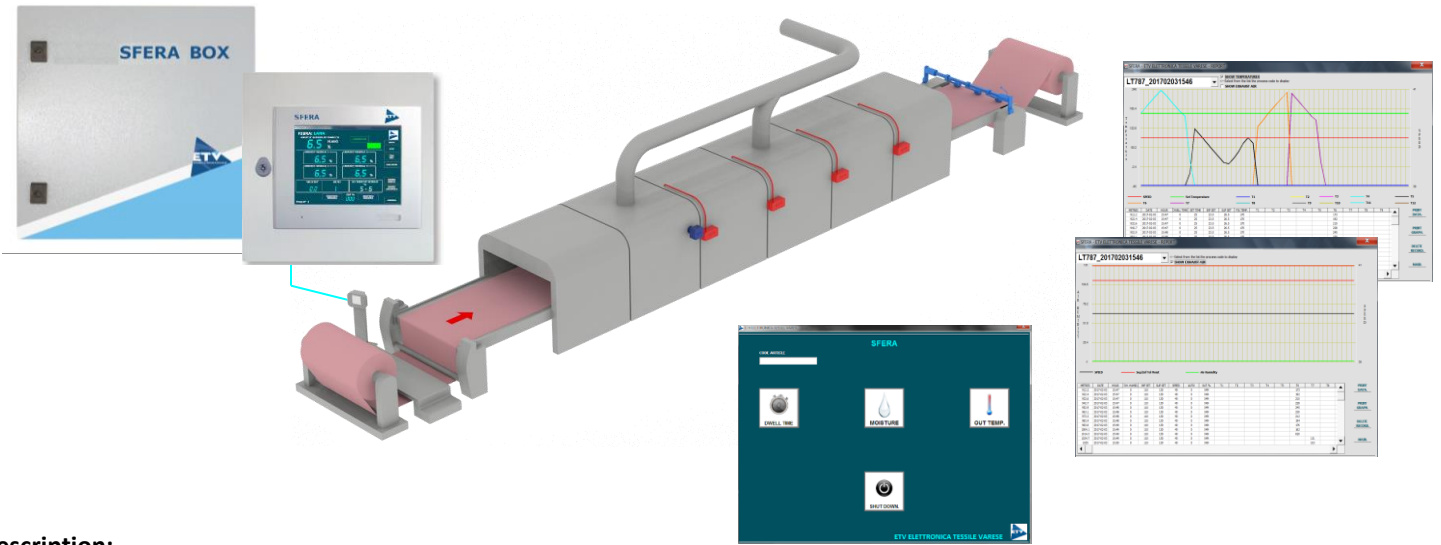







SFERA PLUS

All-in-one stenter control unit



Description:

An all-round modular system to run drying and finishing processes involving natural or man-made fabrics, envisaging automated machine control and adjustment (conveyor and exhaust fan speed) through the measurement of all major processing parameters.

-  **THERMOCONTROL** Contactless fabric temperature measurement plus dwell time assessment.
-  **HYGROBOX-E** Fabric residual moisture meter.
-  **HYGROAIR** Provides monitoring of absolute humidity air levels and the consequent discharge exhaust fumes.

Applications:

Stenters, dryers, hot flues.

Features:



'HEAT TREATMENT' MODE

- The device will measure and display fabric temperature for each field, actual dwell time and machine speed
- Dwell time and heatsetting temperature set-up
- Heatsetting fabric dwell time can be displayed and adjusted
- Automatic machine speed adjustment control:
 - > 2 dry contacts (relay +/-) or (optionally) > 1 analogue output (0 - 10V)



'DRYING CYCLE' MODE

- Measurement of the residual moisture content in the material
- Fibre selection (15 pure fibres + 42 mixed fibres)
- Wide residual moisture measuring range
- Automatic machine speed adjustment control:
 - > 2 dry contacts (relay +/-) or (optionally) > 1 analogue output (0 - 10V)

Optional:

- Drying roller temperature automatic adjustment control (*):
 - > 1 analogue output (0 - 4/20mA) (* modulating valve not included)



'AIR HUMIDITY' MODE

- Measurement of the amount of water in the air (g/kg).
- Absolute air humidity measurement
- 1 analogue output for the automatic adjustment of the exhaust fan speed (*):
 - > 1 analogue output (0 - 10V) (* inverter not included)





Additional features:

- All set parameters and the relevant values are recorded and can be charted
- Data can be downloaded via the USB port on the front panel or through an Ethernet connection
- Remote support (LAN access via a VPN)

Benefits:

- Production quality is constantly monitored ((no reprocessing required))
- Production optimization
- All gathered data are recorded and can be downloaded via an USB port or through an Ethernet connection
- Easy to use (all machine operators shall work in the same way)
- Easy to assemble
- Energy saving
- An automated processing management becomes possible
- Only requires minimal routine maintenance



THERMOCONTROL



HYGROBOX-e



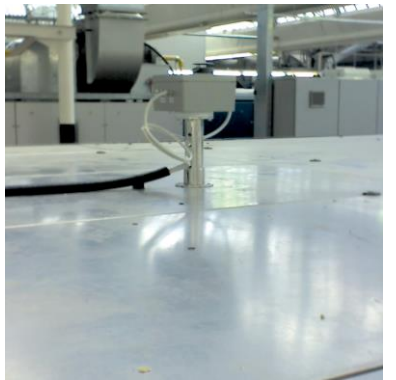
HYGROAIR



To be installed internally
(Max temperature 250°C)

To be installed externally
(dryer outlet)

To be installed internally
(Max temperature 300°C)



SFERA PLUS
summary table
tabella riassuntiva

	residual moisture umidità residua	temperature temperatura	exhausted air humidity aria esausta	residual moisture + exhausted air humidity umidità residua + aria esausta	residual moisture + temperature umidità residua + temperatura	residual moisture + temperature + exhausted air humidity umidità residua + temperatura + aria esausta
Hygrobox-e	○			○	○	○
Thermocontrol		○			○	○
Hygroair			○	○		○

Sfera Plus allows to calculate the actual dwell-times of the fabric in the machine.

Sfera Plus permette di calcolare i reali tempi di permanenza del tessuto in macchina.





Technical Specifications

Overview:

Embedded industry-standard PC, diskless, fanless, with an embedded operating system and SSD, a 10.4" LCD touch-screen colour display (12" or 15" available as optionals) and a frontal USB port.

Dimensions:

- PC metal case size with a 10.4" touch screen (L 400 x H 400 x P 150 mm), weighing 12 kg ca.*
- Remote unit metal case size: L 600 x H 600 x P 250 mm, weighing 30 kg ca.*
(maximum distance between the units: 10 m)

*size and weight may vary depending on the chosen configuration

Peripherals:

- **Inputs**
 - 8 for Thermocontrol fabric temperature sensors
 - 1 for the HygroBox residual moisture sensor
 - 1 for the HygroAir air humidity sensor (operates the exhaust)
 - a module with 8 additional input connectors (to add Thermocontrol, HygroBox or HygroAir sensors) (optional)
 - 1 for the length and speed sensor (encoder)
- **Outputs**
 - 2 relay connectors for speed adjustment
 - 1 analogue output, 0 - 10V (for speed adjustment) (optional)
 - 1 analogue output, 0 - 10V (exhaust fan adjustment)
 - 1 to allow an expansion of the input module
 - 1 for an additional module with three warning lights (amber/red/green) showing the amount of residual moisture (optional)
 - 2 Ethernet ports
 - 3 USB ports (one on the front panel)

Power supply:

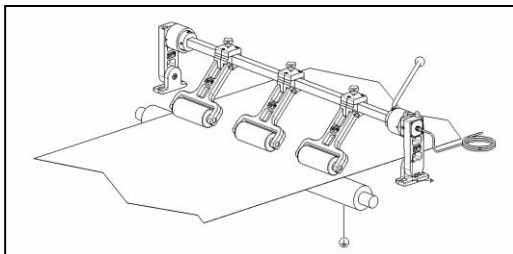
Power supply for the remote unit: 230V - 50/60 Hz (120V - 60 Hz available on demand)

- Power supply for computer and Thermocontrol and HygroBox sensors: 24V DC (power supply housed in the remote unit)
- HygroAir sensor power supply: 24V AC (power supply housed in the remote unit)

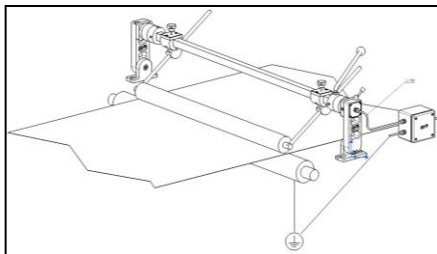
Current: 500 mA - 230 V

NOTE HYGROBOX-e :

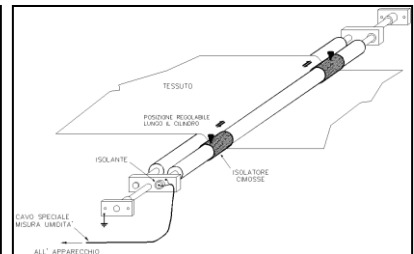
Choice of the residual moisture sensor of the fabric:



(Code: 3R1) Roller sensor unit for spun or woven fabrics, complete with lifting and mounting accessories.



(Code: SR) Single-Roller sensor unit, single-point fabric height, for heavy fabrics and terry, complete with lifting and mounting accessories.



(Code: DR) Double-Roller sensor unit, single-point fabric height, for knitted fabrics or specific for the outlet of belt (tensionless) dryers or stenters, complete with mounting accessories.

